

26

## BIG INDIAN

23015

WEDNESDAY, JULY 2, 1969

Clear

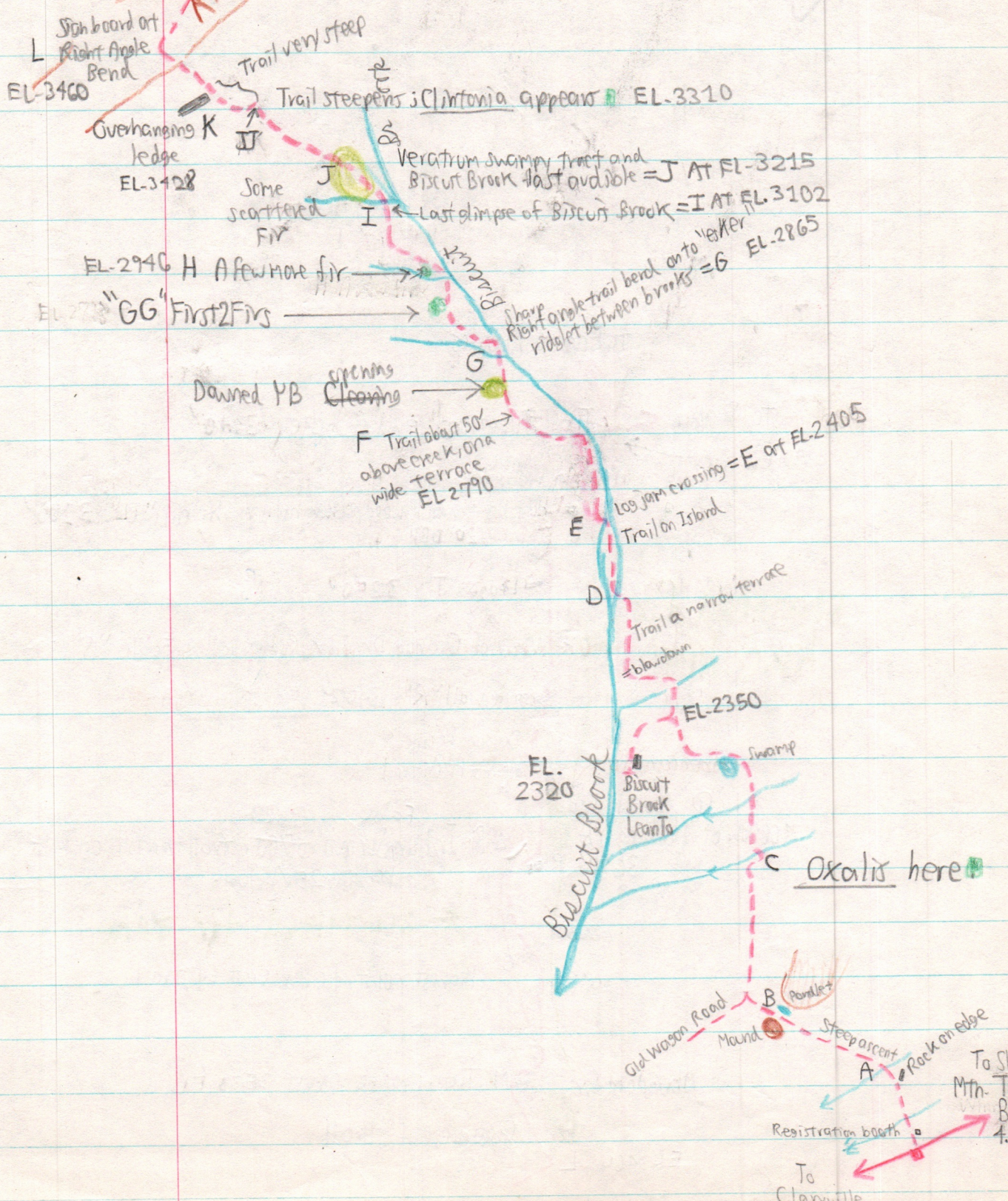
DST Time	Map Elev	Pressure	Miles	Temp	Location	DST Time	Pressure	Mean Interp. Elev.	Temp.
8:20	980	27.43	513.7	54	Deer Haven	5:42	29.27	6'	68
9:03			532.4	59	Trail Base	5:00			
9:13	2120	28.12	0.00			4:48	27.88??		70
9:24					A BROOK; BEGIN STEEP CLIMB				
9:30		27.70			B HILLTOP; JOIN WAGON ROAD	4:40	27.60	2420	
9:49		27.83			C CROSS BROOK WITH TRAIL BEND	4:21	27.74	2320	
10:00	2340	27.80	1.50*		Biscuit Brook Lean-To	4:12	27.77		64
10:07					D SOUTH END ISLAND				
	2350			58	E NORTH END ISLAND, LOGJAM	4:00	27.70	2405	
					F Trail 50' ABOVE BROOK	3:35	27.28	2790	
					G RIGHT ANGLE BEND ON "EJWER"	3:28	27.20	2865	
10:39		27.14			H More Firs	3:25	27.12	2946	
					I Tributary To last glance of Biscuit Brook	3:15	26.94	3102	
10:45		26.90			J VERATRUM SWAMPY TRACT	3:07	26.78	3215	
10:53		26.82			K BOTTOM STEEPEST PART	3:02	26.68	3310	
11:00	3400	26.64			L OVERHANGING LEDGE; TOP OF STEEP GRADE	2:58	26.58	3428	
					GG Additions First 2 Firs			ca 2980?	
10:30		27.32							
					KK		26.68		
11:02	3460	26.60	3.65	61	M RIGHT ANGLE BEND; ON RIDGE	2:55	26.55		
11:11		26.54			N LEDGE TOP	2:47	26.50	3533	
11:20		26.50			O GLIMPSE OF DOUBLE TOP	2:37	26.43	3620?	
11:26		26.42			P SMALL LEDGE			3650?	
11:34					Q BOULDER	2:31	26.38	3680	
12:22	3680	26.42	4.15	60	Big Indian Summit	2:19			
	TRAIL				R STONE WALL? ???	1:52	26.38		62
12:45-53		26.69			S GRAYM-EAGLE GLIMPSE	1:38	26.64	3402	
1:00		26.76			T LEDGE	1:34	26.67	3368	
1:09	3100	26.92			U COL; LARGE HEMLOCK	1:28	26.78	3250	
1:15	3140	26.88	5.65	68?	Seager Trail Junction	1:20	26.92	3	



27

Continued Over 23076

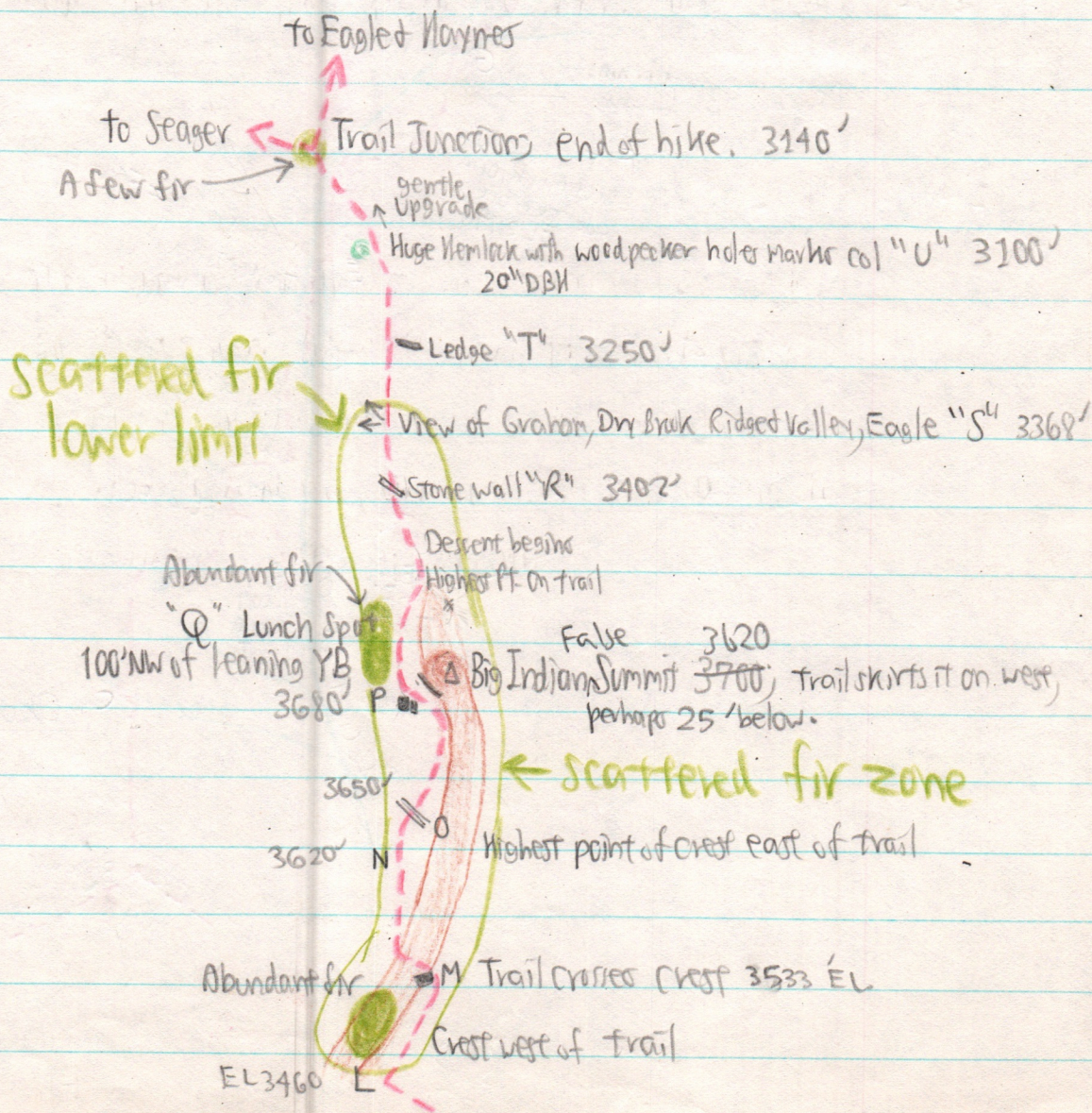
Ridge Crest





28

23017





29

230-18

Ascent from Biscuit Brook

⑧1 Rhytidiadelphus squarrosus<sup>??</sup>, Mnium cuspidatum in brook beds.  
Mnium affine ciliare, Campylidium on logabo, M. cuspidatum  
Scapania undulata brook beds

②3 Biscuit Creek above "E"; aquatics and semi-aquatics:  
Scapania undulata<sup>??</sup> aquatic.

This could  
 easily  
 be  
 checked;  
 elm bark  
 is "chocolate  
 vanilla"  
 7/24/85

Two trees with bark like *Ostrya* just before reaching hilltop at "B" (S side), but straight DBH=10" and tall to 60'+. Could be a different species of elm? Leaves well up in canopy, simple-alternate. Phyllotaxy not discernable.

Forest to and through the Lean-to is mature second growth B-B-M with occasional hemlock and ash. Undergrowth is mostly herb-fern, with bryophytes limited to rocks, logs, and brook beds. Cherry is conspicuously absent (or rare?)

First fir occur at about elevation 2900, and another few at about EL. 2950, and again about 3200 feet. These are all small: 2" DBH x 20 or 25' maximum. No more fir occur until the ridge crest.

*Oxalis* occurs even S of the Lean-to; *Clintonia* enters



30

23049

at 3300 ft.

Along the crest between "L" and "M", is mostly moosewood, yellow birch, beech, black cherry, and red maple. The forest is shorter - only to 30 or 40 feet - than on the slopes below. A large patch of fir occur W of the trail, while scattered fir occur along the trail to the summit. Sugar maple, Paper birch, and Spruce are absent on the crest and summit (or sugar maple scarce where beech hangs on).

#### (54) Big Indian Summit. [NW summit]

Fir are commonest W of the trail, but are scattered on the higher land to the E, some attaining size of 8' x 30'. Other trees are black cherry, yellow birch, and Moosewood, with occasional red maple, mountain ash, and beech. Viburnum alnifolium, Lycopodium lucidulum, Rubus allegheniensis, Dryopteris spinulosa, Oxalis, Tridentalis, Clintonia, Marianthemum, Asplenium acuminatum, Solidago macrophylla, Veratrum, Ribes glandulosum. Dryopteris novaeboracensis is as common as Demissaedra in the sunnier patches, the two often growing together. Many fir are dead and dying, and succumbing to the birch.

The commonest bryophytes, mainly on rock, are Brotherella recurvans, Polytrichum ohioense, Dicranum scoparium, and Plagiothecium denticulatum. Brotherella and Tetraphis occur on the logs. One patch of Sphagnum with Coprinus was observed in a fern glade on the summit. Plagiothecium



grows most often on the undersides of rocks or on lower portions where water drips, giving the plant a flatter, shinier look than

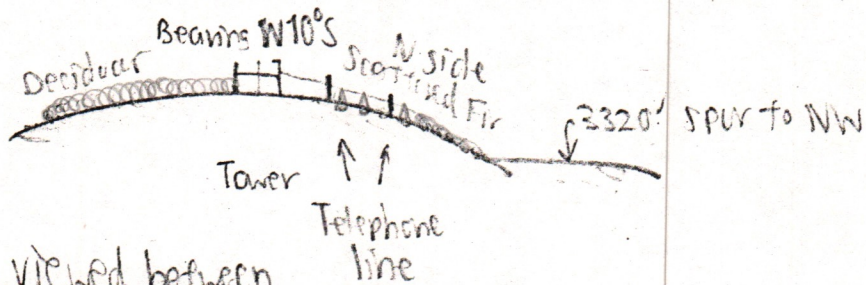
when <sup>just</sup> moist. probably Myrica

~~Celastrus~~ grows with Dicranum on rocks

↑ probably Myrica

### North Slope Big Indian:

Evidence of former <sup>opening</sup> clearing occur on the W side of the trail one making possible a view. Eagle Mtn has a very broad gentle dome, with scattered fir visible with 7X. Dry Brook Ridge appears firless. Graham summit looks like this with 7X:



Double top, viewed between trees of 'N' is covered with fir.

Cleared land in Dry Brook Valley, W slope is visible from 'S'. Some Mtn Maple appear on the N Slope of Big Indian.

On the descent, sugar maple reappears and fir drop out, except for a few fir at the Seeger trail junction. Cherry, beech, yellow birch, moosewood, and hobblebush are abundant.